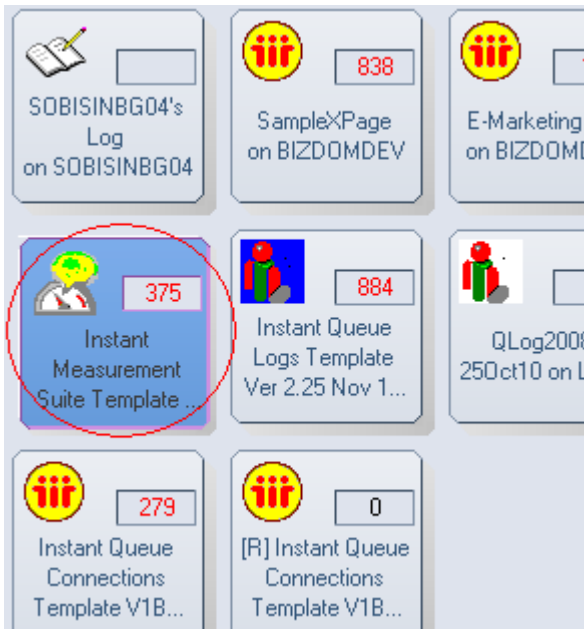


Setting up path the correct path to ITQLogs.nsf database

Step 1: Opening of Measurement Database In Lotus Client



a) Double click on the Instant Measurement Suite Template in the lotus notes client.

Step 2: Editing the set up profile

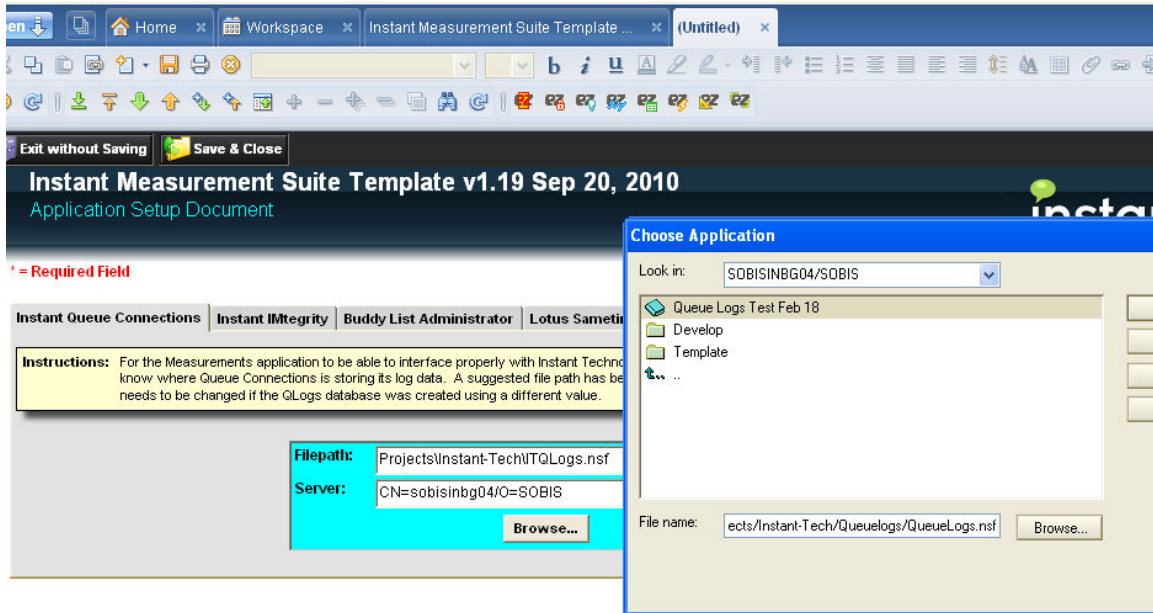
Instant Measurement Suite Template v1.19 Sep 20, 2010
Measurements Portal
Server: CN=SOBISINBG04/O=SOBIS | Version: 1.20 November 02, 2010 | Copyright © 2010, Instant Technologies

Close Edit Setup Profile Create Chart

| Name | Type | Last Modified |
|--|------------------|------------------------|
| → (This Week By Person -> By Day) | 3D Column Fusion | 08/25/2010 12:12:51 PM |
| (This Week By Person -> By Day -> By Hour) | 3D Column Fusion | 08/25/2010 12:12:58 PM |
| ▼ This Month | | |
| Chats By Date S | 2D Scroll Fusion | 10/27/2010 01:06:06 PM |
| → Chats By Date * | 3D Column Fusion | 10/19/2010 04:23:01 PM |
| Chats By Person (5+) F | 3D Column Fusion | 09/16/2010 01:20:45 PM |
| Chats By Week S | 2D Scroll Fusion | 10/27/2010 01:07:40 PM |
| Chats By Week S | 2D Scroll Fusion | 10/27/2010 01:12:36 PM |
| → Chats By Week * | 3D Column Fusion | 10/19/2010 04:24:19 PM |
| → Top 5 Chatters * F | 3D Pie Fusion | 09/16/2010 01:20:52 PM |
| → Top 10 Chatters * F | 3D Pie Fusion | 09/16/2010 01:20:58 PM |
| → Top 20 Chatters * F | 3D Pie Fusion | 09/16/2010 01:21:03 PM |
| → Top 50 Chatters * F | 3D Column Fusion | 10/29/2010 03:52:17 PM |
| → Top 100 Chatters * F | 3D Column Fusion | 10/29/2010 03:53:04 PM |

a) Click on the Edit Setup Profile as shown.

Step 3: Selecting the correct path to ITQLogs.nsf



- a) Under the Instant Queue Connections tab, click on browse to select the path to ITQLogs.nsf on the server.

Step 4: Save the changes

- a) Click on Save & Close.